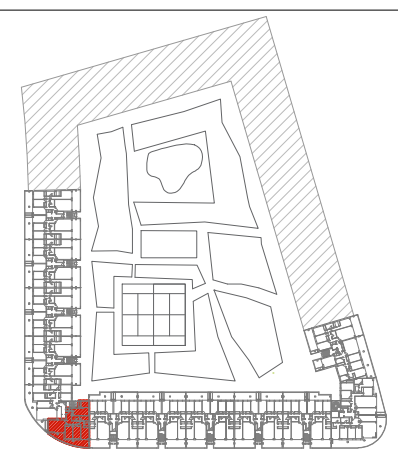
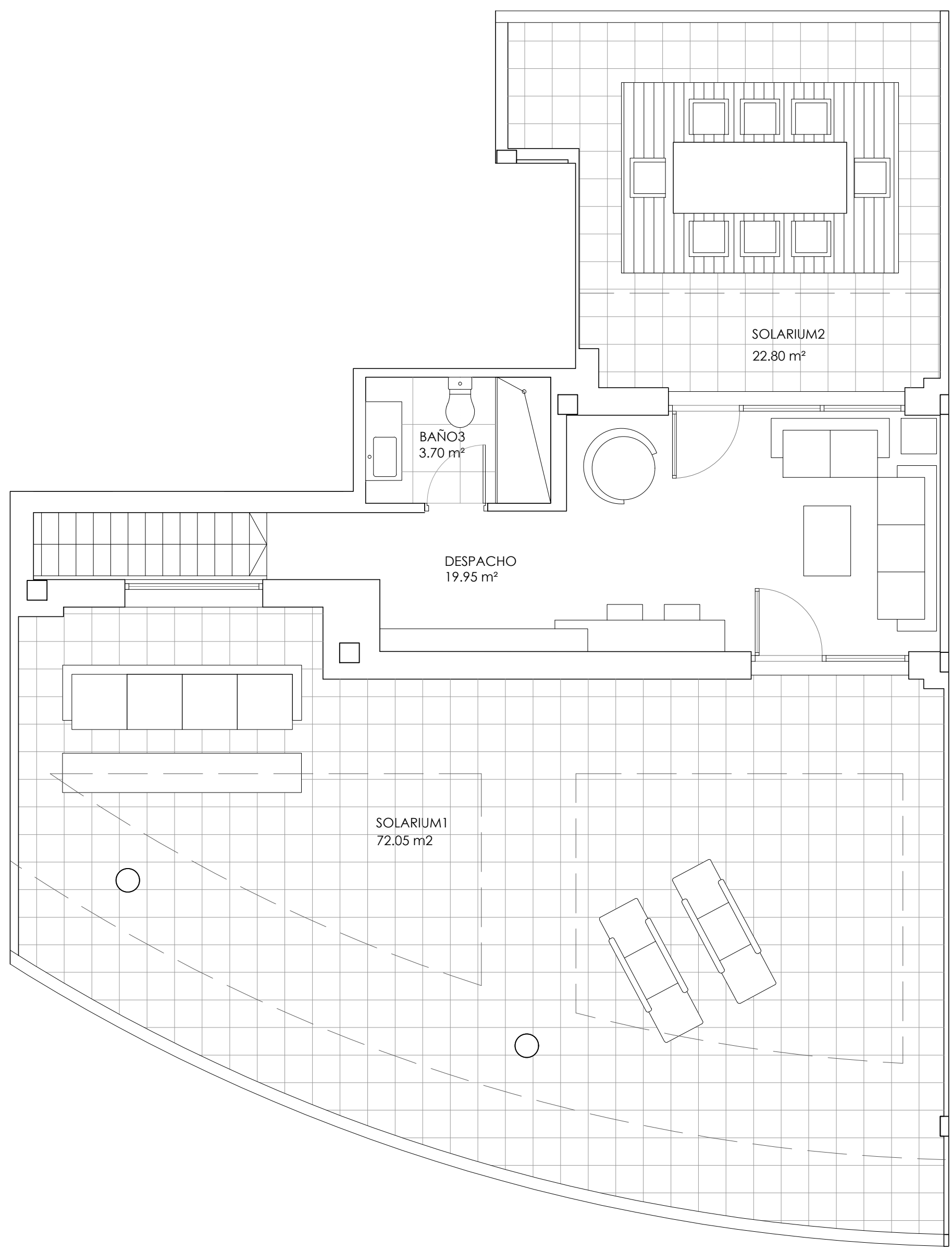


RESIDENCIAL BASA DE LA MORA

E8 7ºB

SUPERFICIES ÚTILES		
CERRADA	TERRAZAS	TOTAL
115.85 m ²	32.90 m ²	148.75 m ²
SOLARIUM		
94.85 m ²		





RESIDENCIAL BASA DE LA MORA

E8 7ºB ATICO

SUPERFICIES ÚTILES		
CERRADA	TERRAZAS	TOTAL
115.85 m ²	32.90 m ²	148.75 m ²
SOLARIUM		
94.85 m ²		

