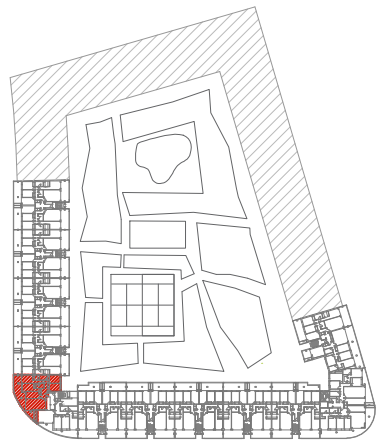
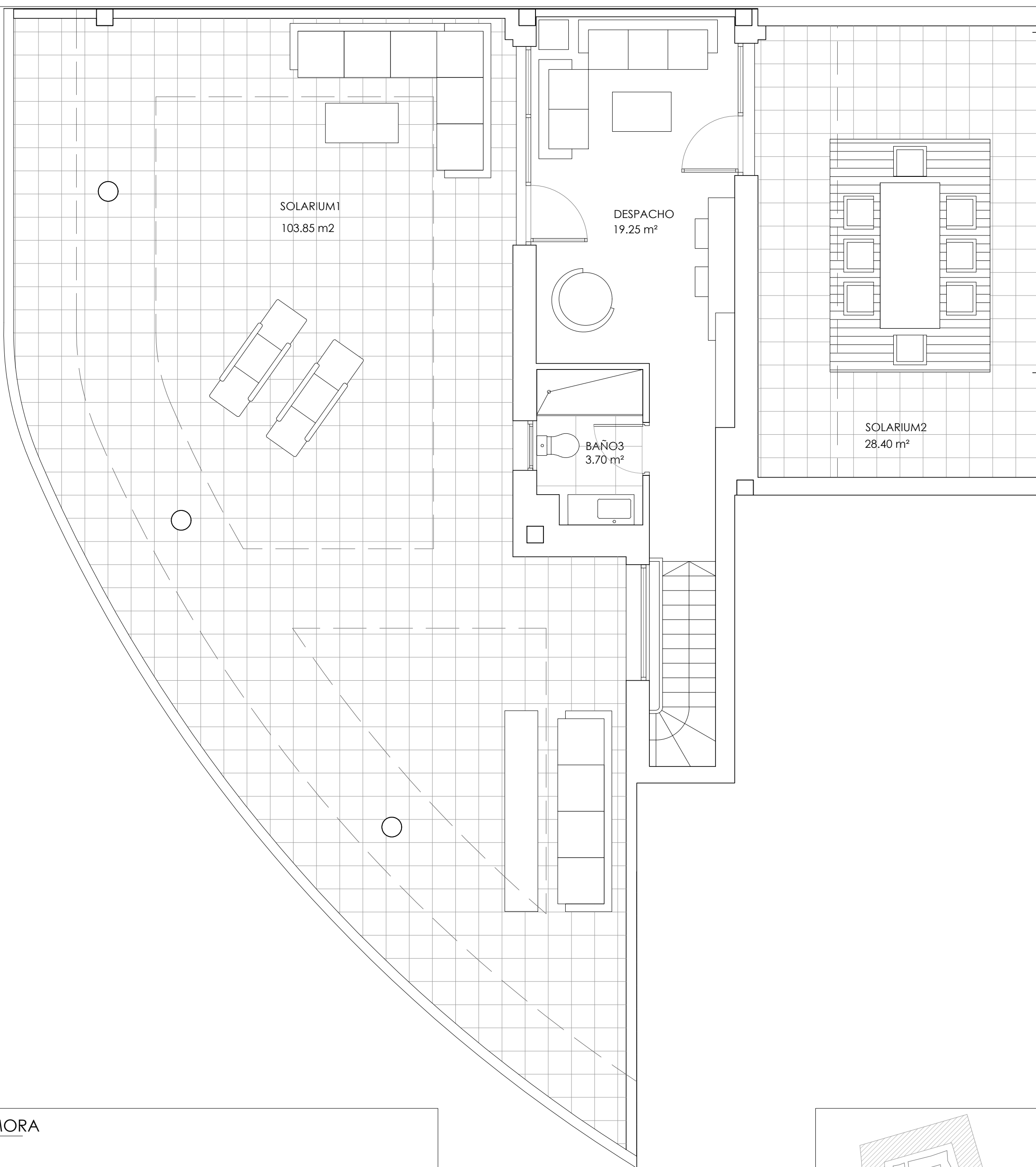


RESIDENCIAL BASA DE LA MORA

E8 7ºA

SUPERFICIES ÚTILES		
CERRADA	TERRAZAS	TOTAL
121.05 m ²	39.10 m ²	160.15 m ²
SOLARIUM		
132.25 m ²		





RESIDENCIAL BASA DE LA MORA

E8 7ºA ATICO

SUPERFICIES ÚTILES		
CERRADA	TERRAZAS	TOTAL
121.05 m ²	39.10 m ²	160.15 m ²
SOLARIUM		
132.25 m ²		

