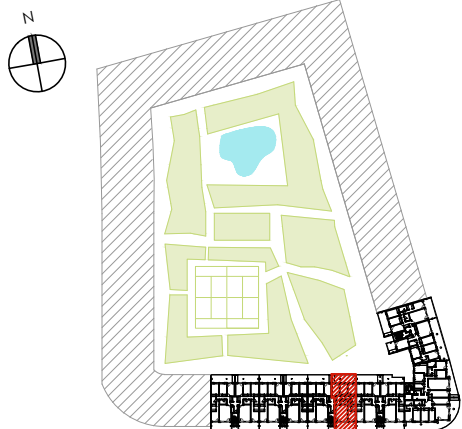


RESIDENCIAL BASA DE LA MORA  
E4 7ºA

SUPERFICIES ÚTILES		
CERRADA	TERRAZAS	TOTAL
105.25 m <sup>2</sup>	33.00 m <sup>2</sup>	138.25 m <sup>2</sup>
SOLARIUM		
100.00 m <sup>2</sup>		





RESIDENCIAL BASA DE LA MORA  
 E4 7ªA ATICO

SUPERFICIES ÚTILES		
CERRADA	TERRAZAS	TOTAL
105.25 m <sup>2</sup>	33.00 m <sup>2</sup>	138.25 m <sup>2</sup>
SOLARIUM		
100.00 m <sup>2</sup>		

