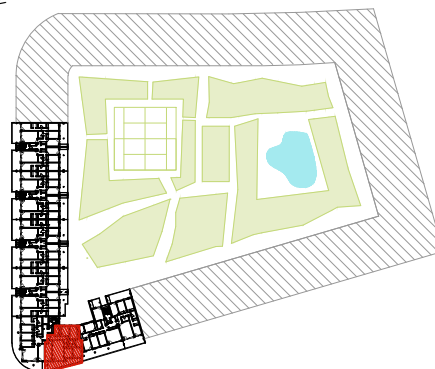
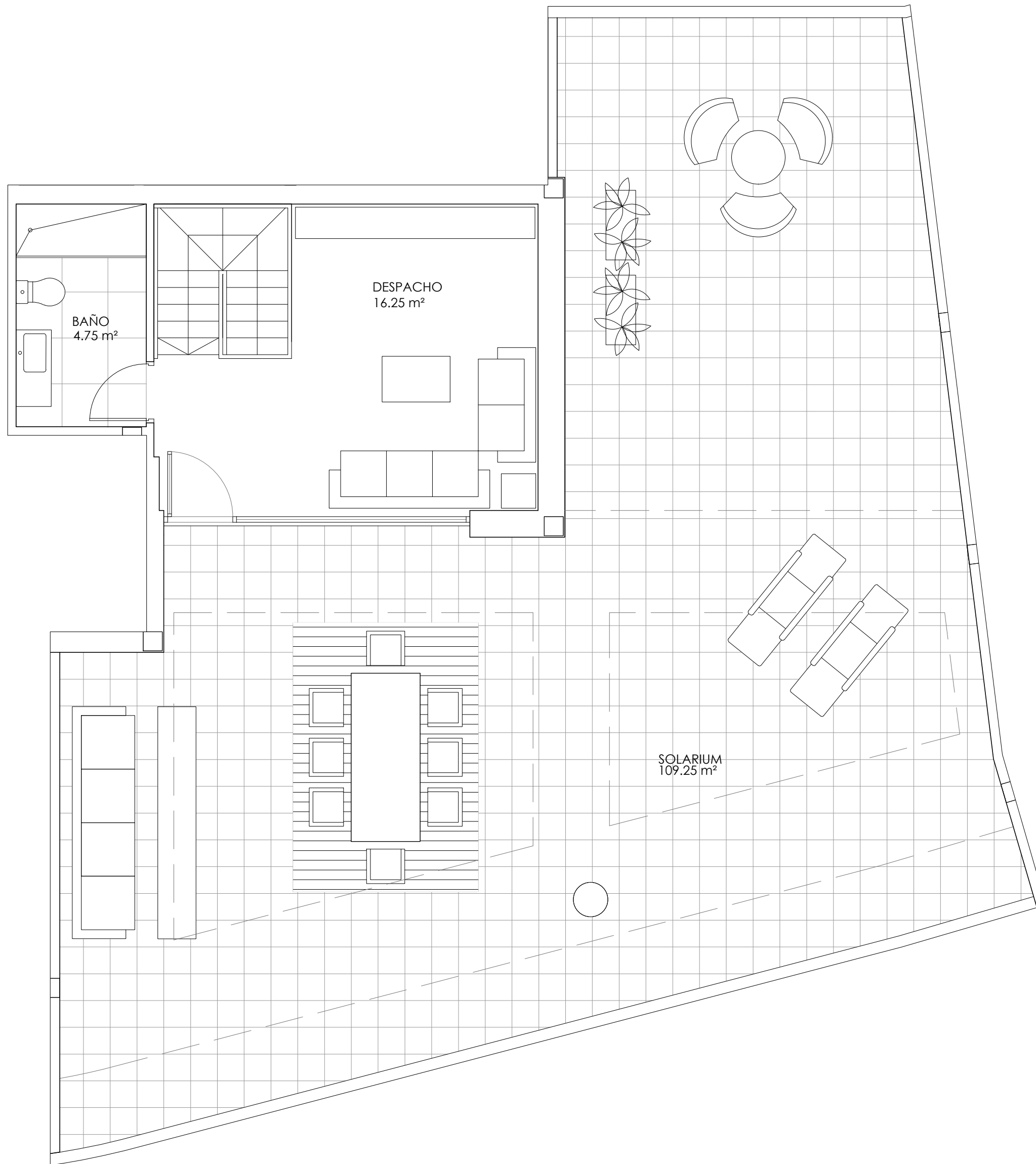


RESIDENCIAL BASA DE LA MORA

E2 7º B

SUPERFICIES ÚTILES		
CERRADA	TERRAZAS	TOTAL
131.00 m <sup>2</sup>	22.75 m <sup>2</sup>	153.75 m <sup>2</sup>
SOLARIUM		
109.25 m <sup>2</sup>		





RESIDENCIAL BASA DE LA MORA

E2 7ºB ATICO

SUPERFICIES ÚTILES		
CERRADA	TERRAZAS	TOTAL
131.00 m <sup>2</sup>	22.75 m <sup>2</sup>	153.75 m <sup>2</sup>
SOLARIUM		
109.25 m <sup>2</sup>		

