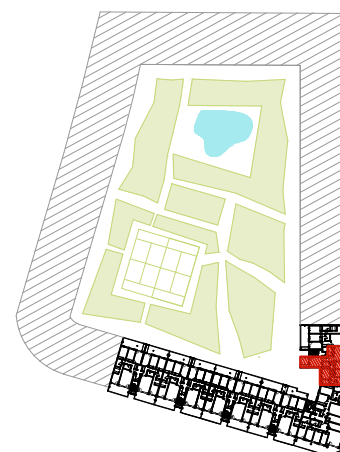
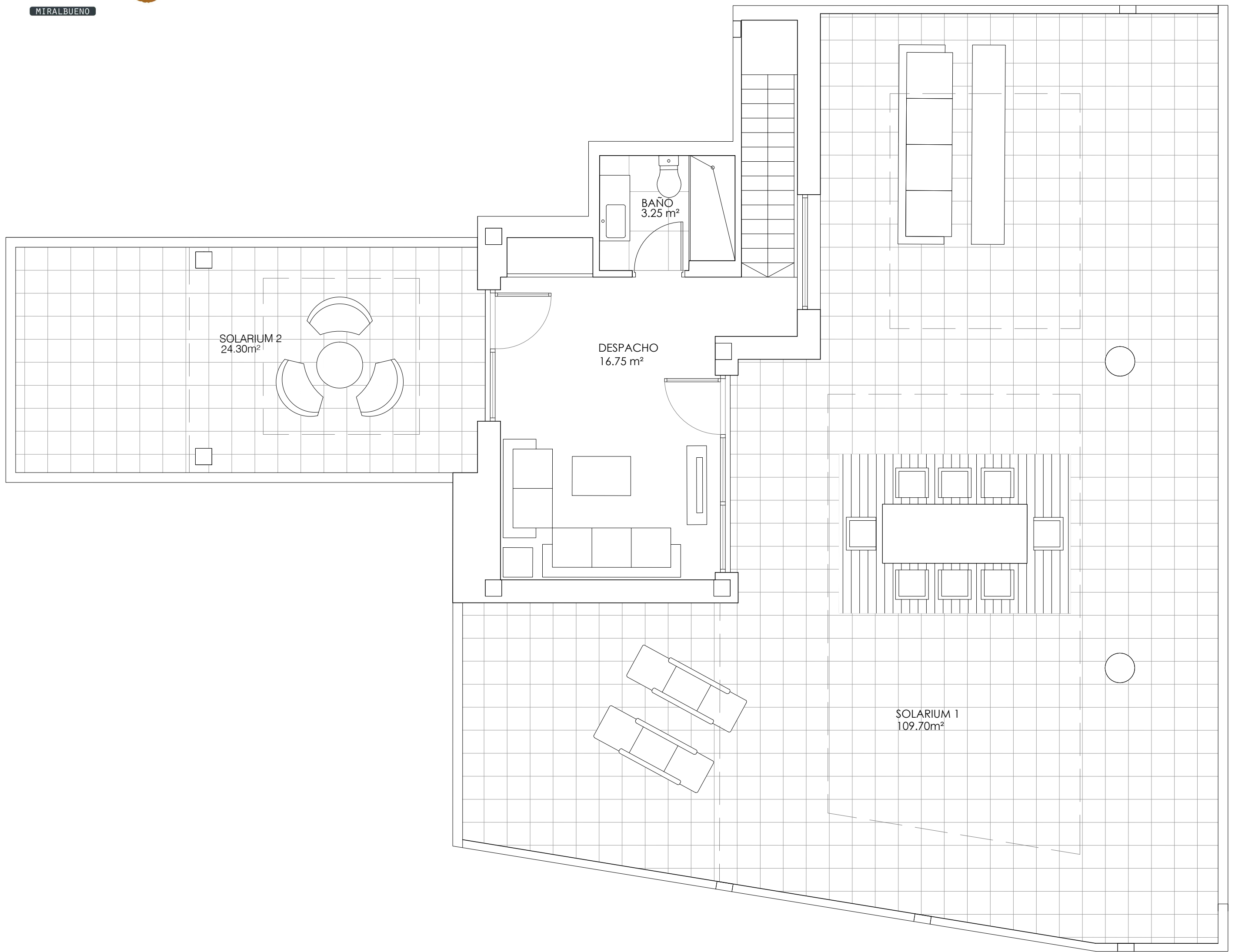


RESIDENCIAL BASA DE LA MORA

E1 7º A

SUPERFICIES ÚTILES		
CERRADA	TERRAZAS	TOTAL
125.25 m²	43.35 m²	168.60 m²
SOLARIUM		
134.00 m²		





RESIDENCIAL BASA DE LA MORA

E1 7ºA ATICO

SUPERFICIES ÚTILES		
CERRADA	TERRAZAS	TOTAL
125.25 m ²	43.35 m ²	168.60 m ²
SOLARIUM		
134.00 m ²		

