

GESTIONA



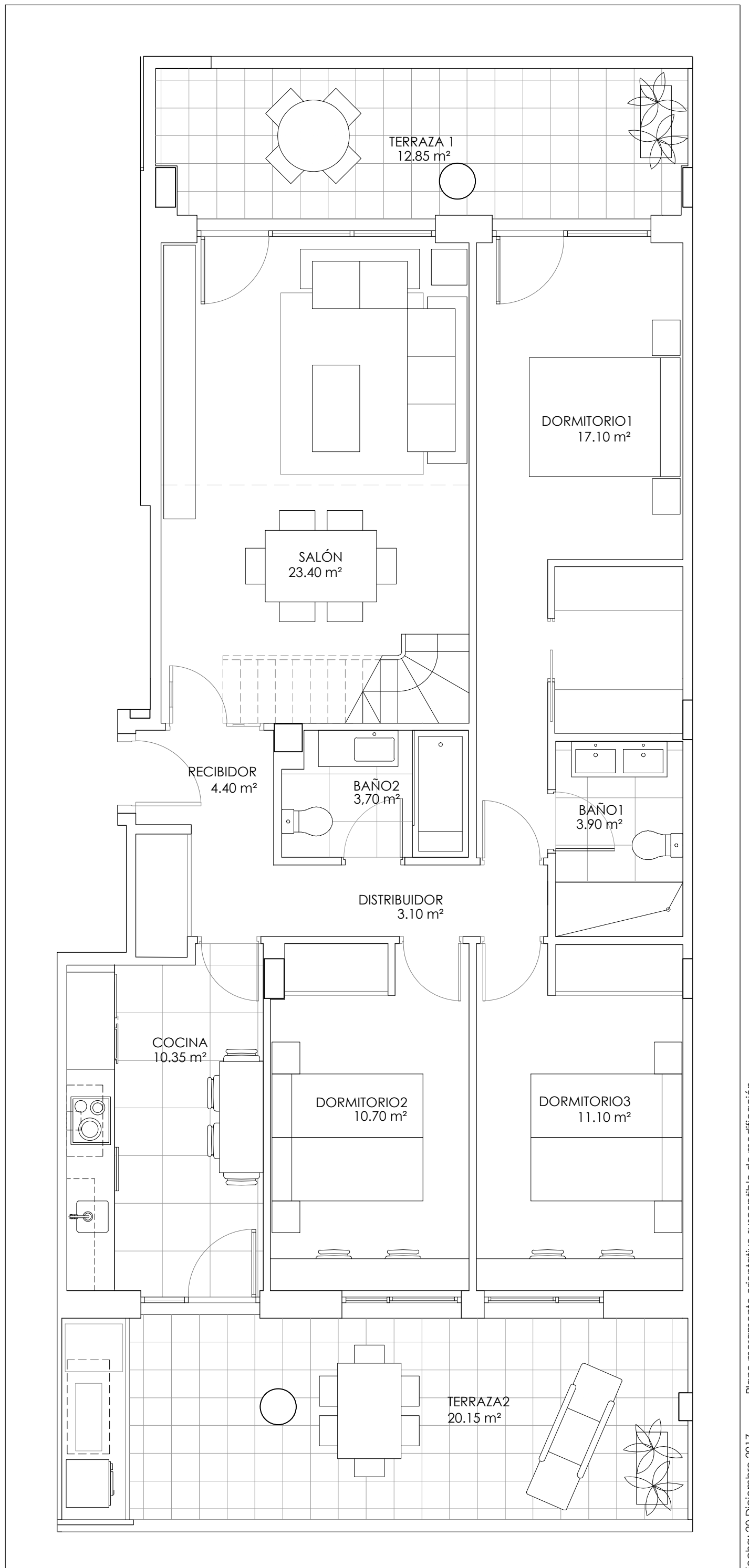
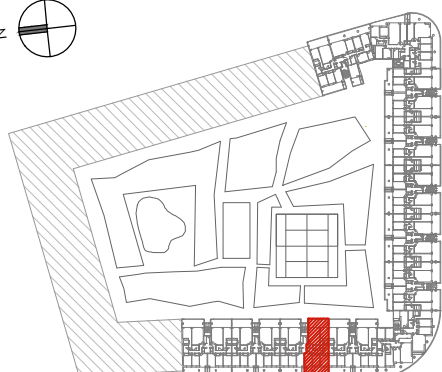
CONSTRUYE

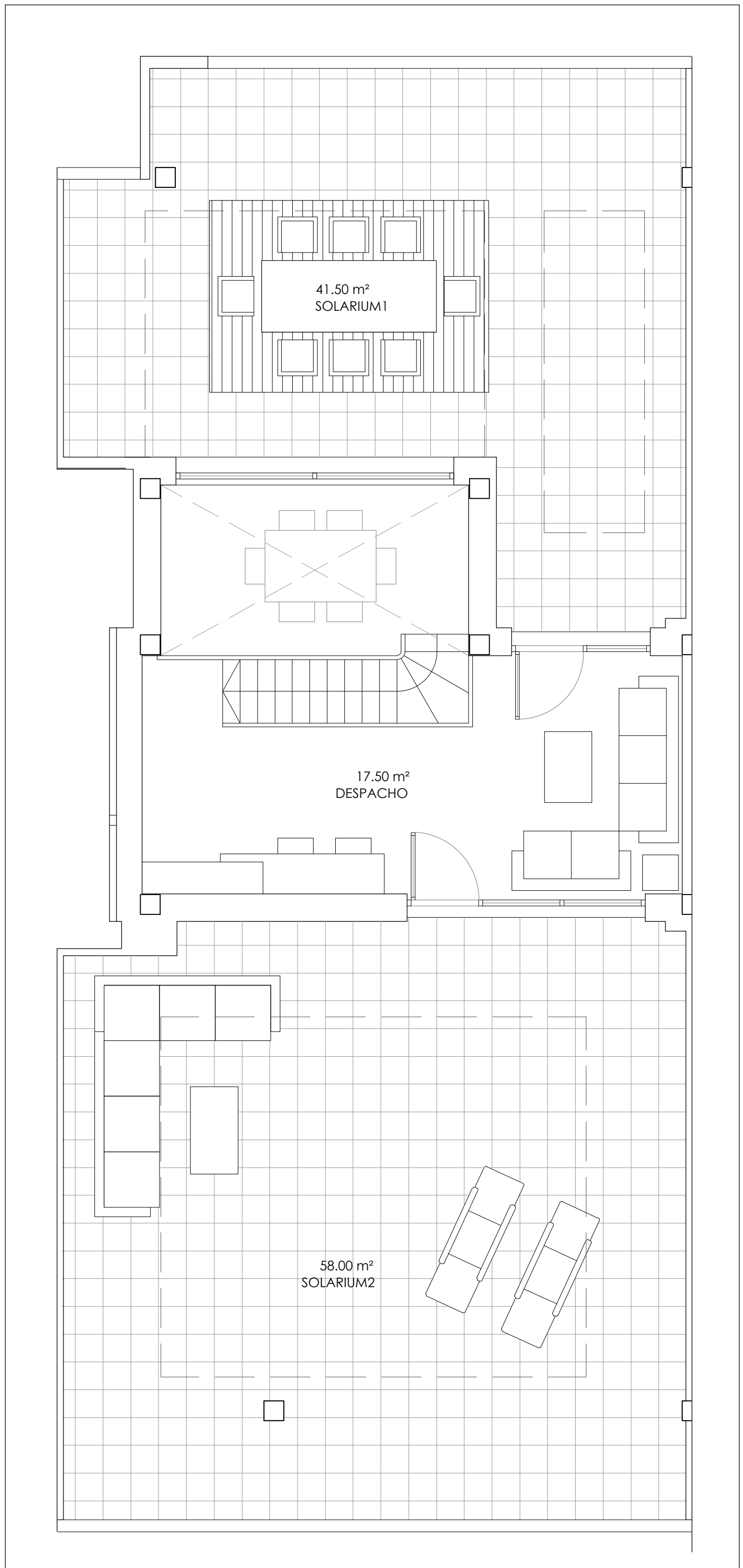


RESIDENCIAL BASA DE LA MORA II

E10 7ºB

SUPERFICIES ÚTILES		
CERRADA	TERRAZAS	TOTAL
105.25 m <sup>2</sup>	33.00 m <sup>2</sup>	138.25 m <sup>2</sup>
SOLARIUM		
99.50 m <sup>2</sup>		





GESTIONA



CONSTRUYE



RESIDENCIAL BASA DE LA MORA II  
 E10 7ºB ATICO

SUPERFICIES ÚTILES		
CERRADA	TERRAZAS	TOTAL
105.25 m <sup>2</sup>	33.00 m <sup>2</sup>	138.25 m <sup>2</sup>
SOLARIUM		
99.50 m <sup>2</sup>		

